



# Liquid Metal AI

The next frontier: Agentic AI

Build on Cloudflare and LiquidMetal



# What is Agentic AI

Agentic AI enables systems to reason, make decisions, and take goal-driven actions autonomously. It goes beyond passive tools by actively processing data, planning, and executing tasks to achieve objectives in dynamic environments.

# 3 COMPONENTS TO AGENTIC AI

×



## INDEXER

Indexers transform any data type for usage in AI applications. Extracting content and structure +



## RETRIEVER

Retrievers find any relevant content based on input queries from humans or Agents.



×

## REASONING

The reasoning engine powers the agents processing, planning, and executing tasks.





# 01

# INDEXING

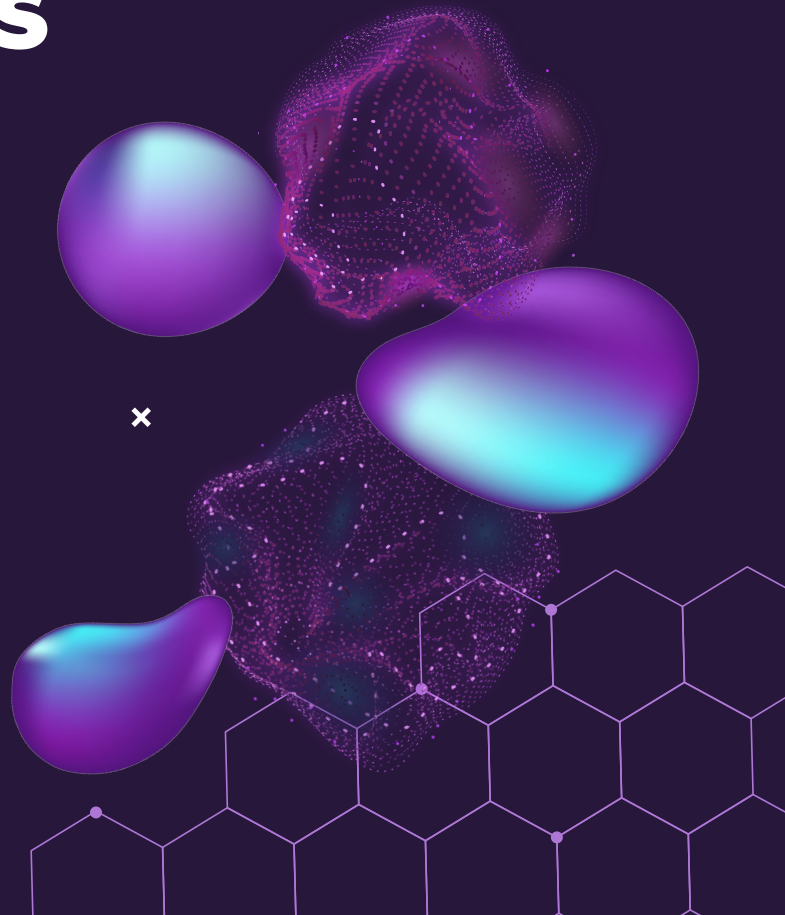
Decompose input data into AI readable formats

×

# INDEXERS

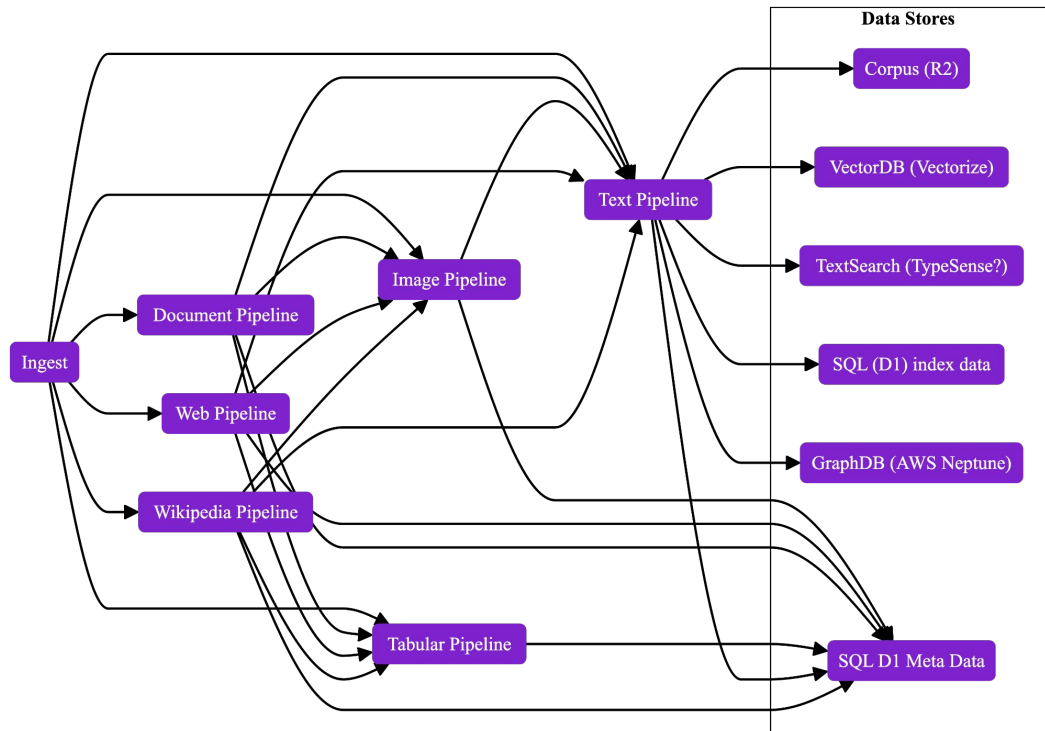
- ◆ Decomposes documents into core elements e.g PDF → text chunks, images, tables, metadata
- ◆ Stores data in Agent friendly format i.e vectors, graphs, SQL tables and more
  - D1, Vectorize, R2, Durable Objects
- ◆ Multi-modal to process the full scope of data

×



# INDEXER ARCHITECTURE

We built this on Cloudflare so you don't have to





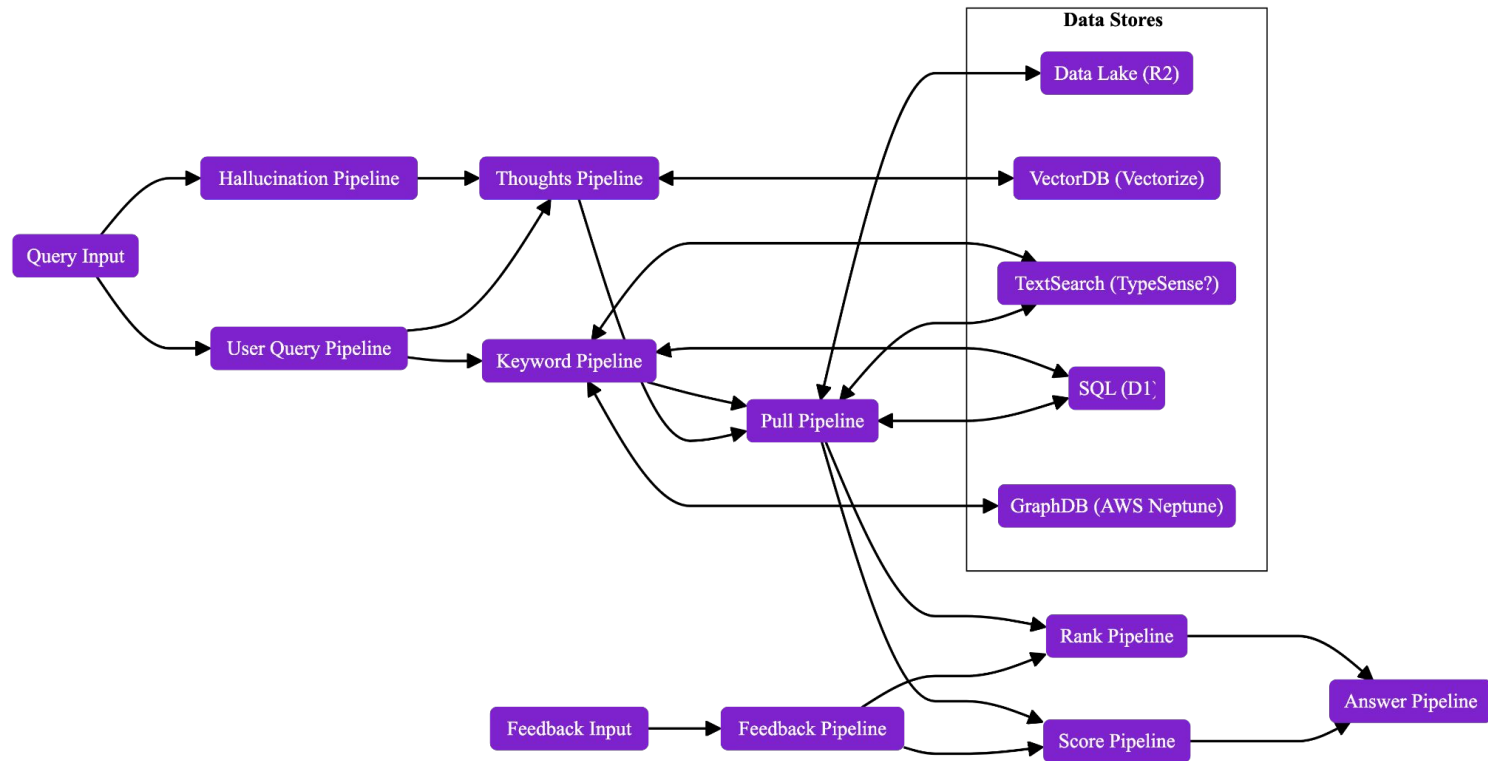
02

# RETRIEVERS

Find the most relevant data for any input query

# RETRIEVER ARCHITECTURE

We built this so on Cloudflare you don't have to



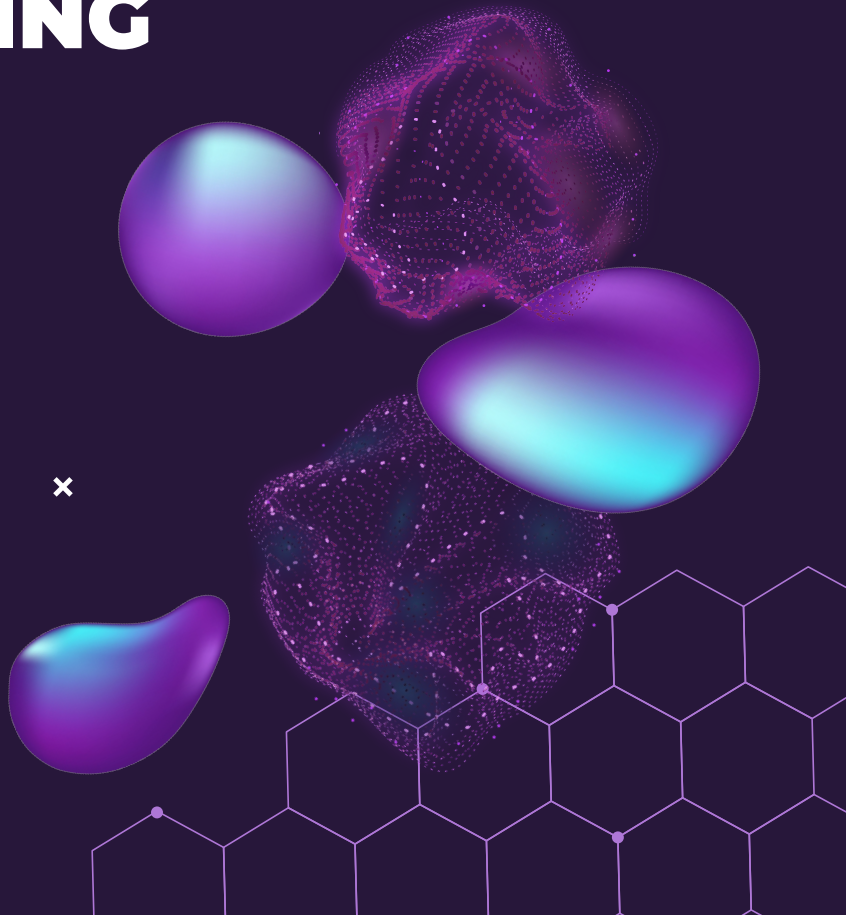


×

# RETRIEVING

- ◆ Extends user input to enable better search
- ◆ Semantic chunking for better matches
- ◆ Searches all data stores (R2, D1, Vectorize, GraphDB, Typesense)
- ◆ SOTA ranking algorithms to find the best matches

×





03

# REASONING

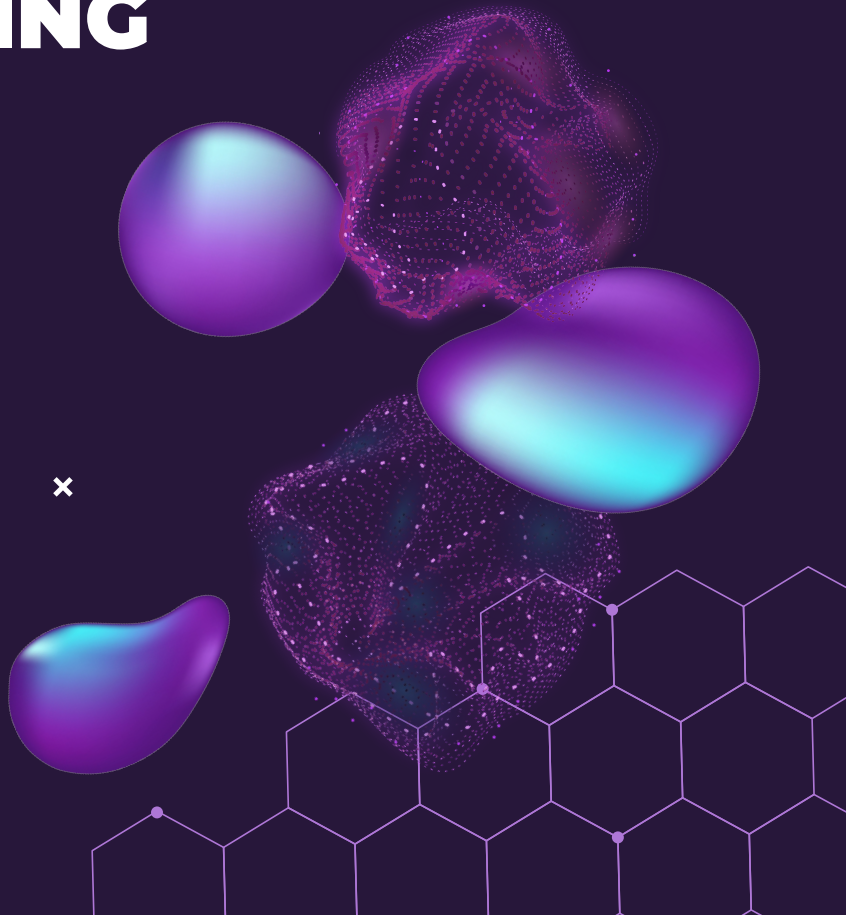
Reasoning engine to analyze, plan, and execute

×

# REASONING

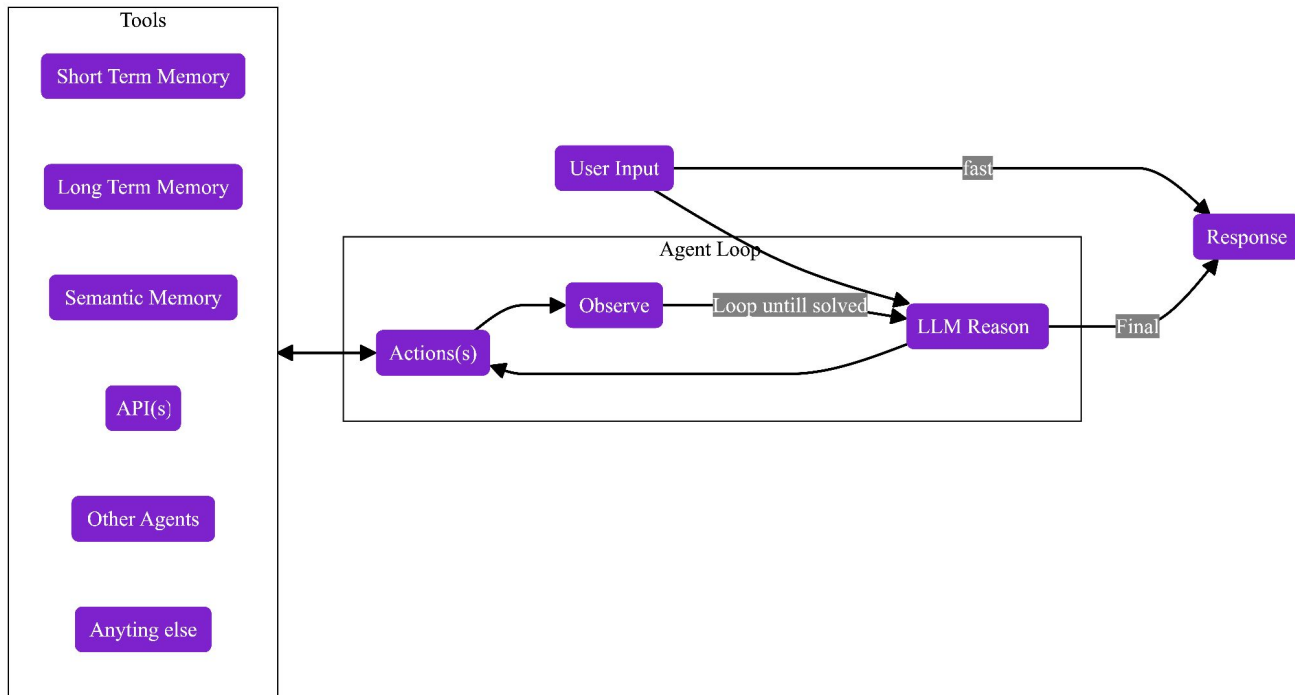
- ◆ Short and long term memory  
(Durable Objects)
- ◆ Various Models (AI gateway) for  
best in class reasoning
- ◆ Tools including API's, our Retriever and  
custom designed solutions

×



# AGENT ARCHITECTURE

We built this on Cloudflare so you don't have to



# ( CLOUDFLARE) RESOURCES

- ◆ Everything from the Developer Platform
  - D1, R2, Vectorize, Workers, AI gateway, Durable Objects, Multiple AI Models
- ◆ Graph DB, Typesense, Sambanova, and others



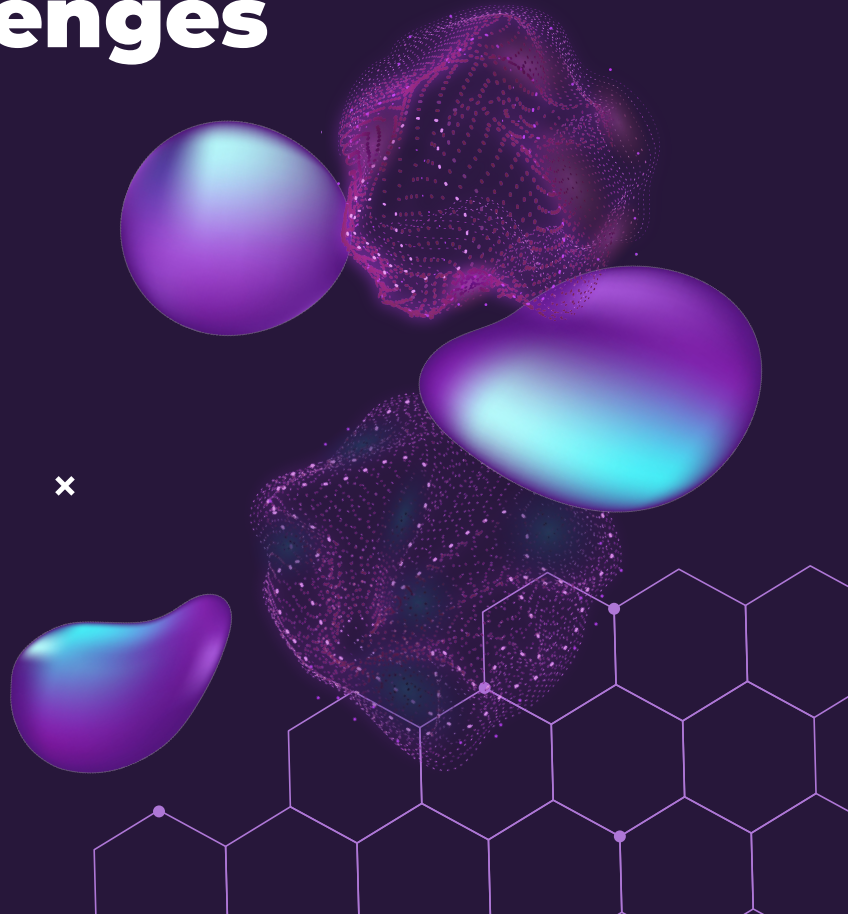
×

# Day 2 Challenges

- ◆ Managing over 250+ resources
- ◆ Data Catalog - Lineage, Access Control, Data Discovery and more
- ◆ Understanding Agentic AI output

×

**That is why we are building Raindrop Catalog,  
Build and Query (on Cloudflare)**



# SIGN UP FOR THE BETA

×

If you are interested in Building Agentic AI on Cloudflare sign up to get early access to our suite of tools for Agentic AI

×

